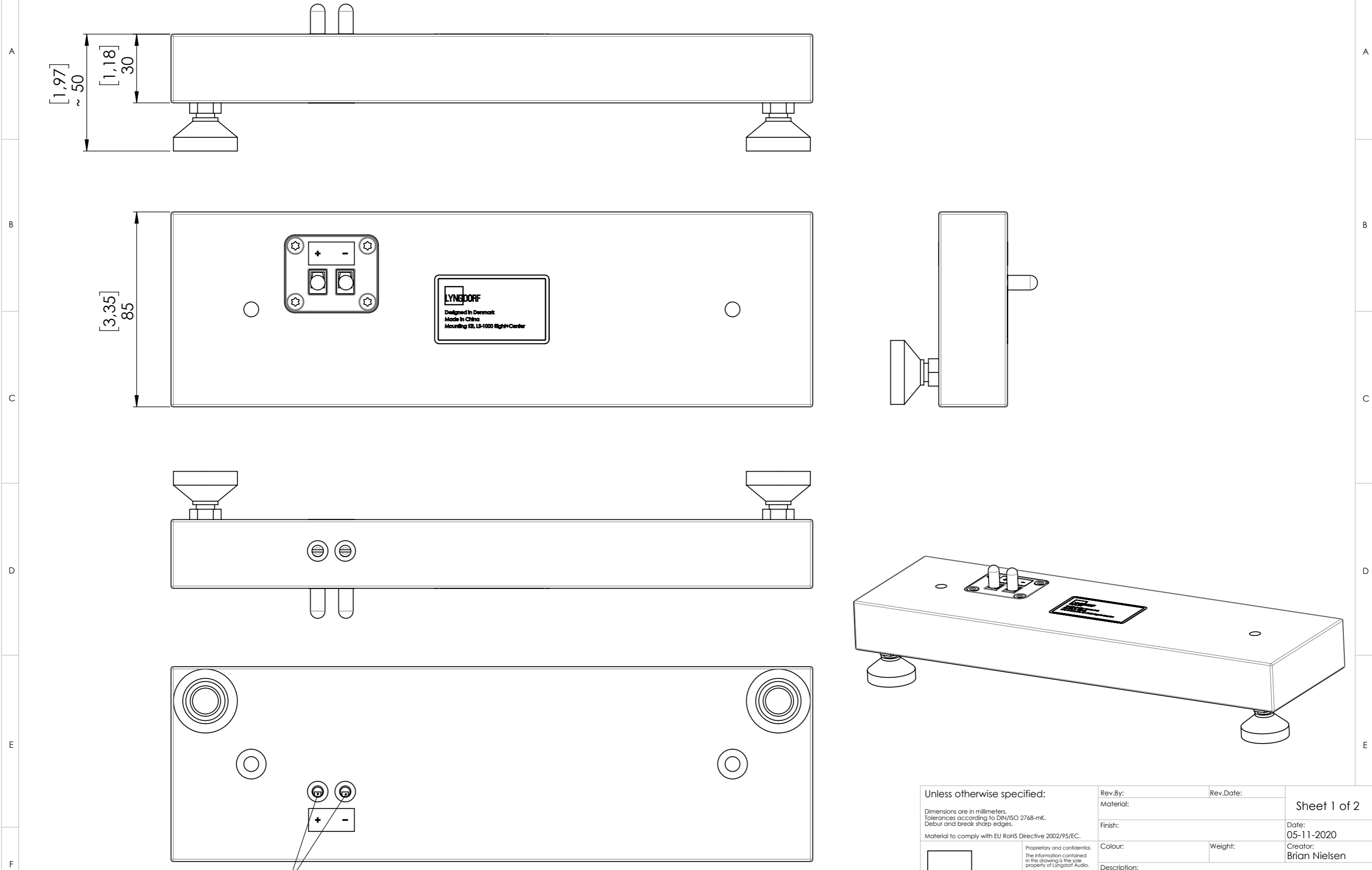



Connection Panel Bottom

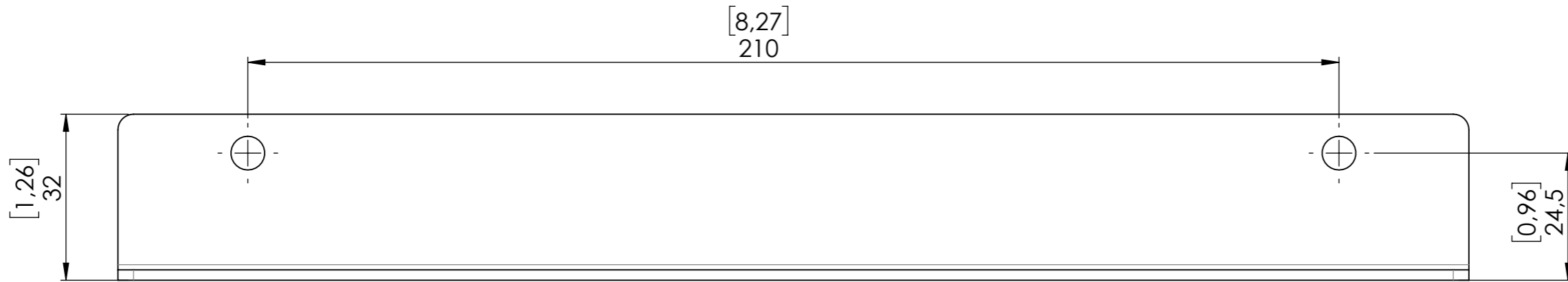
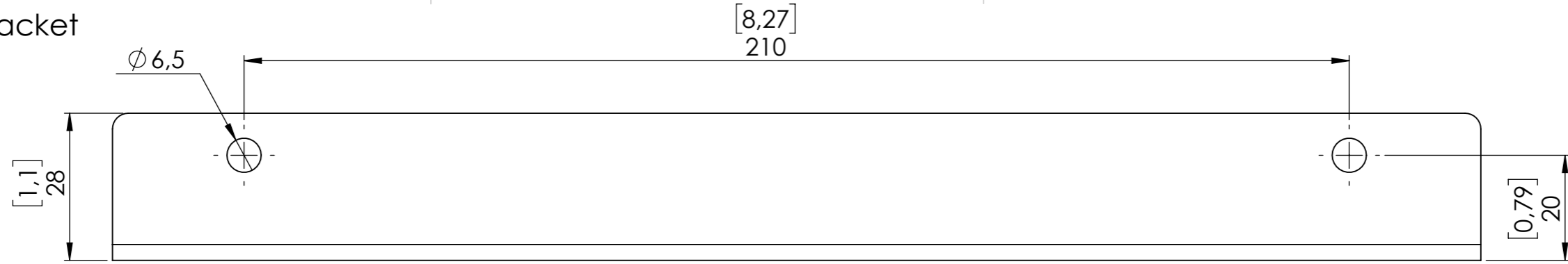


Unless otherwise specified: Dimensions are in millimeters. Tolerances according to DIN/ISO 2768-mK. Debur and break sharp edges. Material to comply with EU RoHS Directive 2002/95/EC.	Rev.By:	Rev.Date:	Sheet 1 of 2
	Material:		
 Lyngdorf Audio, Denmark www.lyngdorf.com	Finish:		Creator: Brian Nielsen
	Colour:	Weight:	Description: Mounting Kit, LS-1000 Right+Center
	Part No.: (Revision)		

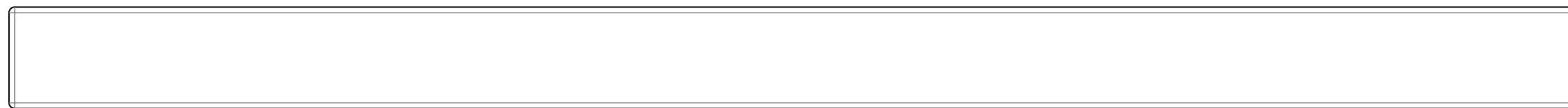
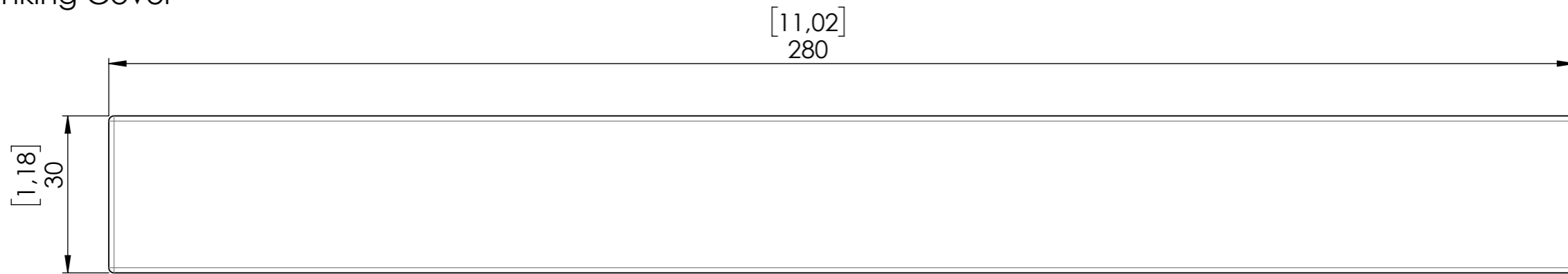
Proprietary and confidential.
 The information contained in this drawing is the sole property of Lyngdorf Audio.
 Any reproduction in part or as a whole without the written permission of Lyngdorf Audio is prohibited.

Scale: Not to scale

Top Bracket



Blanking Cover



Unless otherwise specified:

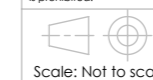
Dimensions are in millimeters.
Tolerances according to DIN/ISO 2768-mK.
Debur and break sharp edges.

Material to comply with EU RoHS Directive 2002/95/EC.



Lyngdorf Audio, Denmark
www.lyngdorf.com

Proprietary and confidential.
The information contained
in this drawing is the sole
property of Lyngdorf Audio.
Any reproduction in part or
as a whole without the written
permission of Lyngdorf Audio
is prohibited.



Rev.By:	Rev.Date:	Sheet 2 of 2
Material:		
Finish:		Date: 05-11-2020
Colour:	Weight:	Creator: Brian Nielsen
Description: Mounting Kit, LS-1000 Right+Center		
Part No.:	(Revision)	